

# 2D Bluetooth Wireless Barcode Scanner Base

## Senso BS983

### FEATURES & BENEFITS

- 32-bit high performance CPU
- Pixel resolution 640\*480 30FPS
- Support 1D/2D barcode on paper and screen
- Manual, Auto-sensing, Continuous mode
- Instant upload, inventory (offline mode)
- Bluetooth(HID,SPP), 2.4GHz RF communication
- With charging base
- Transmission distance-Bluetooth 50m,RF 100m
- 2200mAH battery,2MB memory



### Communication



### Application



Logistics



Warehouse



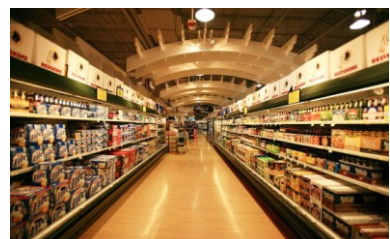
Medical



Library



Shopping Mall



Supermarket

# Technical Specification

## BS983 Parameters

Reading performance	Image Sensor	CMOS 30fps
	Resolution	300 thousand 640*480pixels
	Decoding capacity	Support paper and screen barcodes
		2D: QR ,PDF417,Data Matrix Aztec Maxi code etc.
		1D: UPC-A, UPC-E, EAN-8, EAN-13, Code 128, Code 39, Code 93, Code 11, Interleaved 2of 5, industrial 2 of 5, Matrix 2 of 5, Standard 2 of 5, Coda bar, MSI Plessey, GS1, etc. all normal 1D
	Precision	4mil
	Light Source	617nm Visible red LED, white LED
	Scan Angle	Rotation360° ,tilt±60° ,skew±60°
	Min Contrast	25%
	Scanning Speed	500 times/s
Mechanical and electrical	Typical DOF	60-100mm(4mil code39) 50-250mm(13mil EAN13)
		40-300mm(20mil QR) 40-280mm(10mil PDF417)
	Performance may be impacted by bar code quality and environmental conditions	
	Interface	USB/USB COM Bluetooth 2.4GHz RF wireless
	Bluetooth Mode	HID SPP BLE
	Working Voltage	DC 5V
	Current	200mA(working) 10mA(standby)
	Battery	2200mAH lithium battery, working 3-7days,charge time 4-5H
	Memory Size	8K characters/barcode≤128
	Dimensions	170*65*100mm(scanner) 120*95*65mm(charging base)
Environment Request	Weight	450g
	Cable Length	1.5M
	Indication	Buzzer & LED
	Working Tem	-20~60℃
	Storage Tem	-40~85℃
	Humidity	5%-95%(Non-condensing)
	Light Immunity	0~100,000Lux
	Drop Test	1.5M